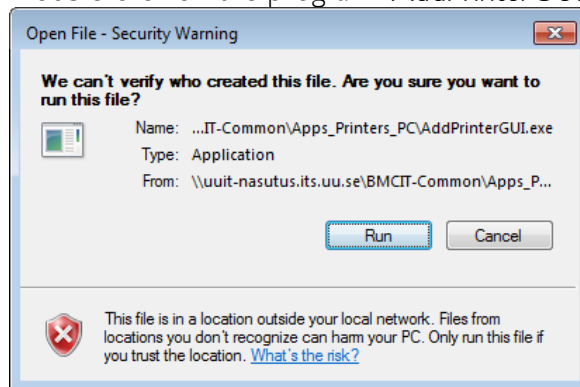




## SOP – Install local printer in Win7 using PrintGUI

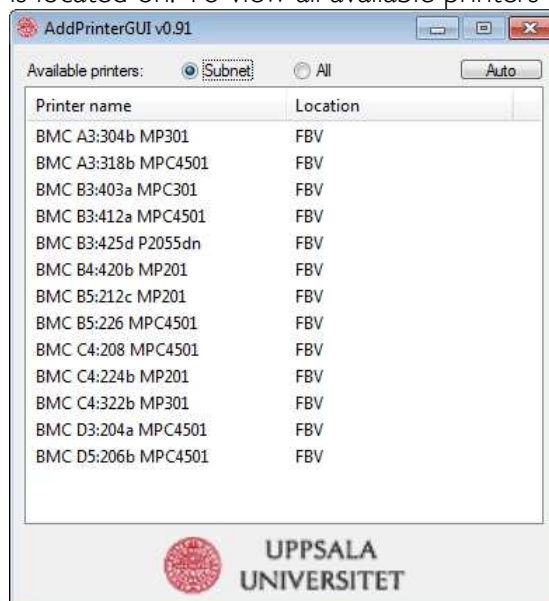
### 1 Start AddPrinterGUI

- 1.1 You need to have local admin rights to be able to install a local printer. The computer must run a 64-bit Windows.
- 1.2 Press the Windows-key on your keyboard and run:  
`\\uuit-nasutus.its.uu.se\BMCIT-Common\Apps_Printers_PC`
- 1.3 If prompted with password, use your "AKKA-id@user.uu.se" and password A.
- 1.4 Double-click on the program "AddPrinterGUI.exe" to start it. Run the program:



### 2 Install the printer

- 2.1 The application shows a list of printers depending on what subnet your computer is located on. To view all available printers click the "All" radio button.



- 2.2 Double-click on a printer in the list to install it. Wait a while for the installation to finish.
- 2.3 Close the PrinterGUI program.